

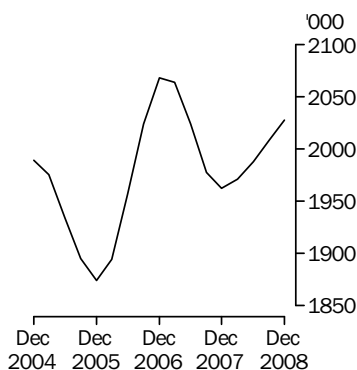
LIVESTOCK PRODUCTS

AUSTRALIA

EMBARGO: 11.30AM (CANBERRA TIME) MON 16 FEB 2009

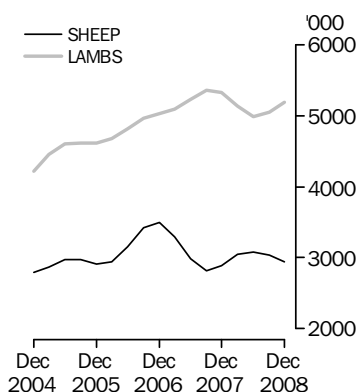
Cattle slaughtering

Excluding calves
Trend



Sheep and lamb slaughtering

Trend



KEY FIGURES

TREND ESTIMATES	Dec Qtr 2007 '000	Sep Qtr 2008 '000	Dec Qtr 2008 '000
Number slaughtered			
Cattle (excl. calves)	1 962.7	2 008.9	2 027.1
Calves	210.0	202.7	199.7
Sheep	2 890.1	3 038.4	2 944.9
Lambs	5 322.7	5 047.6	5 192.3
Pigs	1 330.5	1 180.1	1 140.6
Chickens	114 788.9	117 397.7	118 677.4

	Dec Qtr 2007 tonnes	Sep Qtr 2008 tonnes	Dec Qtr 2008 tonnes
Meat produced			
Beef	524 836	538 504	539 977
Veal	6 812	6 523	6 599
Mutton	63 060	64 055	61 349
Lamb	111 754	101 803	104 153
Pig meat	96 720	84 458	81 438
Chicken meat	200 303	205 016	208 740
Wool receivals	103 089	94 855	92 072

	Sep Qtr 2007 ML	Jun Qtr 2008 ML	Sep Qtr 2008 ML
Whole milk intake by factories	2 288	2 348	2 383

KEY POINTS

TREND ESTIMATES

- In the December quarter 2008, the trend estimate for the number of lambs slaughtered increased by 3% to 5.2 million.
- In the December quarter 2008, the trend estimate for the number of pigs slaughtered fell by 3% to 1.1 million.
- In the December quarter 2008, the trend estimate for the number of sheep slaughtered fell by 3% to 2.9 million.

INQUIRIES

For further information about these and related statistics, contact the National Information and Referral Service on 1300 135 070.

NOTES

FORTHCOMING ISSUES

ISSUE (Quarter)

RELEASE DATE

March 2009

15 May 2009

.....

CHANGES IN THIS ISSUE

There are no changes in this issue.

.....

ABBREVIATIONS

'000 thousand

ABS Australian Bureau of Statistics

ML megalitre

t tonne

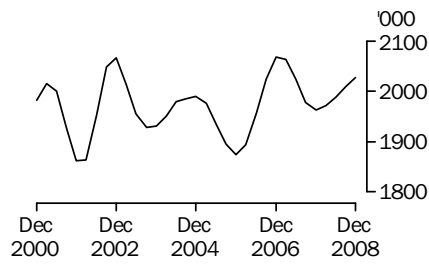
UHT ultra heat treated

Brian Pink

Australian Statistician

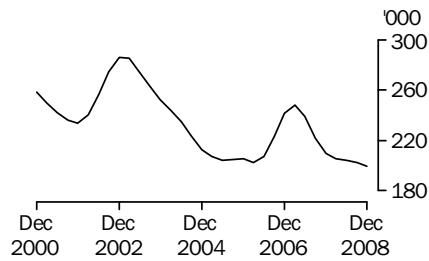
LIVESTOCK SLAUGHTERED TREND

CATTLE (EXCLUDING CALVES)



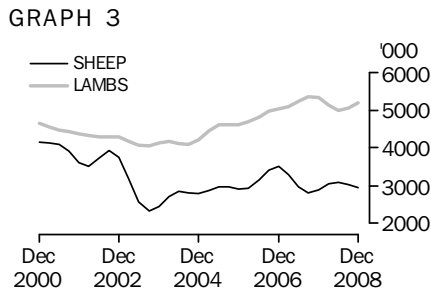
The trend estimate for the number of cattle (excluding calves) slaughtered increased by 1% to 2 million.

CALVES



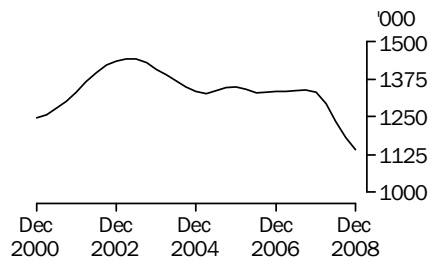
The trend estimate for the number of calves slaughtered in the December quarter 2008 decreased by 1% to 200 thousand.

SHEEP AND LAMBS



In the December quarter 2008, the trend estimate for the number of sheep slaughtered decreased by 3% to 2.9 million. The trend estimate for the number of lambs slaughtered increased by 3% for the December quarter 2008 to 5.2 million.

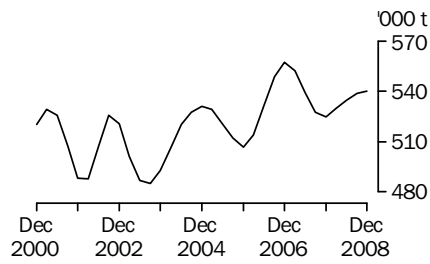
PIGS



The trend estimate for the number of pigs slaughtered in the December quarter 2008 fell by 3% to 1.1 million.

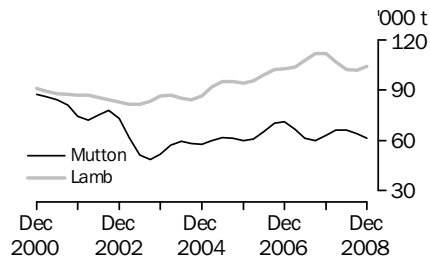
MEAT PRODUCTION TREND

BEEF



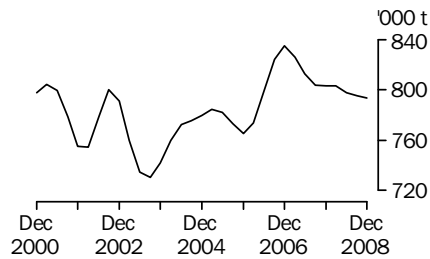
In the December quarter 2008, the trend estimate for beef production remained steady at 540 thousand tonnes.

MUTTON AND LAMB



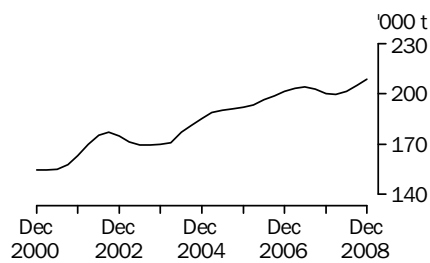
In the December quarter 2008, the trend estimate for mutton production decreased 4% to 61 thousand tonnes. The trend estimate for lamb production this quarter increased by 2% to 104 thousand tonnes.

TOTAL RED MEAT



The trend estimate for total red meat production remained steady at 794 thousand tonnes in the December quarter 2008.

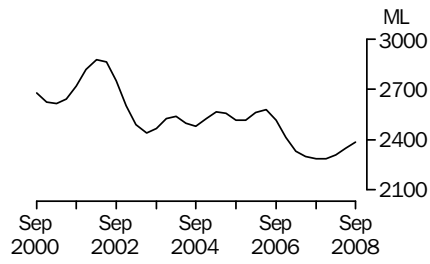
CHICKEN MEAT



The trend estimate for chicken meat production in the December quarter 2008 increased by 2% to 209 thousand tonnes.

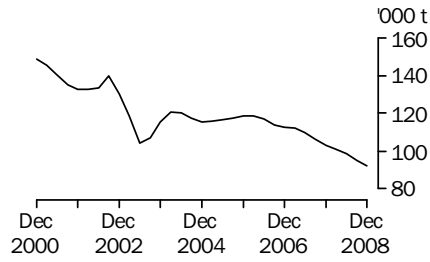
LIVESTOCK PRODUCTS TREND

WHOLE MILK INTAKE BY FACTORIES



The trend estimate for whole milk intake by factories in the September quarter 2008 increased by 2% to 2,383 million litres.

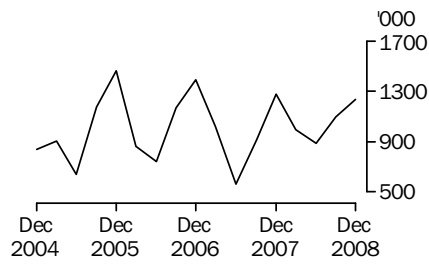
BROKERS AND DEALERS RECEIVALS OF TAXABLE WOOL



The trend estimate for wool receivals by brokers and dealers in the December quarter 2008 decreased by 3% to 92 thousand tonnes.

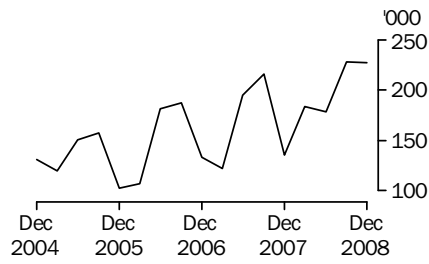
LIVESTOCK EXPORTS ORIGINAL

EXPORTS OF LIVE SHEEP



Live sheep exports increased by 12% to 1.2 million in the December quarter 2008. Gross value rose by 17% for the quarter, up to \$101 million. Unit value increased by 4% to \$82.21.

EXPORTS OF LIVE CATTLE



Live cattle exports remained steady at 227 thousand in the December quarter 2008. Gross value rose by 19% for the quarter, up to \$167 million. Unit value increased by 19% to \$737.23.

LIST OF TABLES AND GRAPHS

page

OVERVIEW

1	Number of livestock slaughtered, Australia	9
2	Livestock products, Australia	10

LIVESTOCK SLAUGHTERINGS

3	Number of livestock slaughtered, bulls, bullocks and steers, by state	11
4	Number of livestock slaughtered, cows and heifers, by state	12
5	Number of livestock slaughtered, total cattle (excluding calves), by state	13
6	Number of livestock slaughtered, calves, by state	14
7	Number of livestock slaughtered, sheep, by state	15
8	Number of livestock slaughtered, lambs, by state	16
9	Number of livestock slaughtered, pigs, by state	17
10	Number of chickens slaughtered, by state	18
11	Number of livestock slaughtered, financial year, by state	19

MEAT PRODUCED

12	Red meat produced, beef, by state	20
13	Red meat produced, veal, by state	21
14	Red meat produced, mutton, by state	22
15	Red meat produced, lamb, by state	23
16	Red meat produced, pig meat, by state	24
17	Total red meat produced, by state	25
18	Chicken meat produced, by state	26
19	Meat produced, financial year, by state	27

EXPORTS OF MEAT AND LIVE ANIMALS

20	Exports of fresh, chilled, frozen and processed meat, Australia	28
21	Exports of live sheep and cattle, Australia	29

LIVESTOCK PRODUCTS

22	Whole milk intake by factories, by state	30
23	Market milk sales by factories, by state	31
24	Brokers and dealers receivals of taxable wool, by state	32
25	Livestock products, financial year, by state	33

NUMBER OF LIVESTOCK SLAUGHTERED, Australia(a): All Series

Quarter	Bulls, bullocks and steers	Cows and heifers	Cattle (excluding calves)	Calves	Sheep	Lambs	Pigs	Chickens(b)
	'000	'000	'000	'000	'000	'000	'000	'000
ORIGINAL								
2007								
September	1 038.8	945.7	1 984.5	405.2	2 282.1	5 182.5	1 348.3	113 435.5
December	1 084.5	906.5	1 991.0	154.6	3 325.6	5 680.9	1 322.8	119 574.6
2008								
March	929.2	874.2	1 803.5	96.4	3 408.9	5 013.3	1 263.3	112 972.3
June	1 079.5	1 075.9	2 155.3	208.3	2 912.0	5 022.4	1 282.3	115 057.5
September	1 051.6	955.6	2 007.2	370.7	2 511.7	4 653.9	1 154.6	116 143.6
December	1 028.8	960.3	1 989.1	140.7	3 184.1	5 652.6	1 141.5	122 244.6
SEASONALLY ADJUSTED								
2007								
September	1 012.5	970.2	1 982.7	223.6	2 807.1	5 514.0	1 350.8	114 228.6
December	1 063.1	946.8	2 009.9	213.3	2 968.3	5 405.9	1 337.1	116 143.4
2008								
March	982.3	914.7	1 897.0	194.8	2 978.7	5 065.5	1 293.1	113 348.8
June	1 068.5	965.6	2 034.1	211.8	3 158.4	4 932.1	1 237.9	117 414.9
September	1 028.2	980.9	2 009.1	204.7	3 093.8	4 943.4	1 158.1	116 988.1
December	1 007.0	1 001.2	2 008.2	193.9	2 835.6	5 374.8	1 152.9	118 673.1
TREND								
2007								
September	1 024.0	953.2	1 977.2	222.0	2 814.5	5 355.4	1 339.6	114 812.9
December	1 021.8	940.9	1 962.7	210.0	2 890.1	5 322.7	1 330.5	114 788.9
2008								
March	1 031.9	939.5	1 971.4	205.4	3 046.4	5 131.4	1 292.4	115 243.9
June	1 033.4	954.3	1 987.7	204.2	3 084.0	4 989.2	1 232.6	116 196.3
September	1 029.4	979.6	2 008.9	202.7	3 038.4	5 047.6	1 180.1	117 397.7
December	1 024.1	1 002.9	2 027.1	199.7	2 944.9	5 192.3	1 140.6	118 677.4

(a) Australian total includes all states and both territories, unless otherwise noted. For more information refer to paragraphs 5, and 7 to 9 of the Explanatory Notes.

(b) Excludes Tasmania, Northern Territory and the Australian Capital Territory.

LIVESTOCK PRODUCTS, Australia(a): All Series

Quarter	RED MEAT						Chicken meat(b)	Whole milk intake by factories	Brokers and dealers receipts of taxable wool
	Beef	Veal	Mutton	Lamb	Pig meat	Total red meat			
	tonnes	tonnes	tonnes	tonnes	tonnes	tonnes	tonnes	ML	tonnes
ORIGINAL									
2007									
September	530 877	10 757	49 637	106 211	98 271	795 753	199 865	2 304	108 630
December	533 589	5 853	75 098	120 576	95 079	830 195	207 705	2 993	118 408
2008									
March	486 457	4 250	73 912	105 745	90 999	761 362	194 188	2 118	98 799
June	576 336	6 807	59 803	102 860	93 013	838 819	200 625	1 797	82 044
September	538 945	9 473	53 017	91 360	83 093	775 887	205 667	2 341	100 421
December	533 421	5 443	68 978	113 698	80 924	802 464	211 180	nya	102 884
SEASONALLY ADJUSTED									
2007									
September	528 738	7 431	60 592	114 954	97 547	809 262	201 464	2 331	101 772
December	535 249	6 983	64 664	115 327	97 312	819 534	204 052	2 251	104 620
2008									
March	510 978	6 016	65 220	104 279	94 097	780 590	195 678	2 285	100 998
June	549 378	6 728	67 541	101 549	88 673	813 868	201 218	2 396	99 731
September	537 398	6 532	64 715	98 852	82 613	790 111	207 407	2 362	94 245
December	534 452	6 492	59 330	108 110	82 747	791 131	207 468	nya	91 047
TREND									
2007									
September	527 533	7 281	60 144	111 604	97 127	803 689	202 791	2 288	106 048
December	524 836	6 812	63 060	111 754	96 720	803 182	200 303	2 287	103 089
2008									
March	529 713	6 506	66 301	106 988	93 588	803 096	199 662	2 309	101 204
June	534 680	6 452	66 034	102 065	88 699	797 930	201 576	2 348	98 634
September	538 504	6 523	64 055	101 803	84 458	795 343	205 016	2 383	94 855
December	539 977	6 599	61 349	104 153	81 438	793 516	208 740	nya	92 072

nya not yet available

(a) For more information refer to paragraphs 5 to 9 and 13 to 15 of the Explanatory Notes.

(b) Excludes Tasmania, Northern Territory and the Australian Capital Territory.

NUMBER OF LIVESTOCK SLAUGHTERED (a), Bulls, bullocks and steers: All Series

Quarter	New South Wales	Victoria	Queensland	South Australia	Western Australia	Tasmania	Australia (b)
	'000	'000	'000	'000	'000	'000	'000
ORIGINAL							
2007							
September	222.3	124.9	587.1	38.4	48.4	17.4	1 038.8
December	236.5	163.8	558.9	42.6	62.3	20.2	1 084.5
2008							
March	228.8	150.2	432.4	48.6	48.1	21.0	929.2
June	234.3	140.3	603.1	32.3	50.5	18.7	1 079.5
September	234.8	117.7	604.1	27.9	49.3	17.7	1 051.6
December	227.5	136.5	538.5	40.9	67.0	18.2	1 028.8
SEASONALLY ADJUSTED							
2007							
September	225.2	144.1	525.3	47.3	51.7	20.2	1 012.5
December	241.2	150.0	549.4	38.5	52.6	19.7	1 063.1
2008							
March	228.6	139.0	508.7	41.4	49.7	18.9	982.3
June	227.6	146.6	590.7	35.7	55.4	18.7	1 068.5
September	237.7	135.7	542.5	34.2	52.7	20.4	1 028.2
December	231.6	124.8	528.7	37.1	56.4	17.7	1 007.0
TREND							
2007							
September	231.4	144.5	533.4	44.3	50.4	20.3	1 024.0
December	231.3	144.6	530.0	42.1	51.7	19.6	1 021.8
2008							
March	232.2	145.2	544.3	38.8	52.3	19.1	1 031.9
June	231.7	141.3	552.8	36.7	53.0	19.2	1 033.4
September	232.2	135.3	550.3	35.7	54.3	19.1	1 029.4
December	234.3	128.9	542.3	35.3	55.6	18.8	1 024.1

(a) For more information refer to paragraphs 4, 5 and 7 of the Explanatory Notes.

(b) Includes all states and both territories.

NUMBER OF LIVESTOCK SLAUGHTERED(a), Cows and heifers: All Series

Quarter	New South Wales	Victoria	Queensland	South Australia	Western Australia	Tasmania	Australia(b)
	'000	'000	'000	'000	'000	'000	'000
ORIGINAL							
2007							
September	204.7	221.7	389.3	29.8	67.0	32.2	945.7
December	211.2	223.6	328.7	46.2	64.2	31.6	906.5
2008							
March	205.6	232.4	285.6	37.0	78.4	34.4	874.2
June	244.9	276.2	407.9	37.6	68.6	39.6	1 075.9
September	218.7	262.6	346.8	24.3	73.8	28.4	955.6
December	230.4	291.7	291.6	37.0	74.0	34.8	960.3
SEASONALLY ADJUSTED							
2007							
September	213.7	237.0	372.3	37.9	68.1	36.8	970.2
December	213.1	221.0	375.6	42.1	67.0	34.4	946.8
2008							
March	218.2	228.7	319.6	33.5	73.3	34.4	914.7
June	219.6	266.2	344.5	37.1	69.4	32.5	965.6
September	228.4	281.4	332.2	31.3	75.1	32.4	980.9
December	232.9	287.7	331.5	33.4	77.3	37.8	1 001.2
TREND							
2007							
September	211.7	227.9	367.8	38.9	68.3	35.5	953.2
December	214.3	225.7	356.9	38.4	68.9	35.3	940.9
2008							
March	217.2	237.6	344.3	37.0	70.1	33.7	939.5
June	221.7	258.2	334.6	34.7	72.1	33.1	954.3
September	227.2	278.3	332.7	33.2	74.3	34.0	979.6
December	232.2	291.0	334.6	32.9	76.1	35.6	1 002.9

(a) For more information refer to paragraphs 4, 5 and 7 of the Explanatory Notes. (b) Includes all states and both territories.

NUMBER OF LIVESTOCK SLAUGHTERED(a), Total cattle (excluding calves): All Series

Quarter	New South Wales	Victoria	Queensland	South Australia	Western Australia	Tasmania	Australia (b)
	'000	'000	'000	'000	'000	'000	'000
ORIGINAL							
2007							
September	427.0	346.6	976.5	68.2	115.4	49.6	1 984.5
December	447.8	387.4	887.6	88.8	126.5	51.8	1 991.0
2008							
March	434.3	382.5	718.0	85.6	126.4	55.4	1 803.5
June	479.2	416.5	1 011.1	69.9	119.1	58.3	2 155.3
September	453.5	380.2	950.9	52.2	123.1	46.0	2 007.2
December	457.9	428.1	830.0	77.9	141.0	53.0	1 989.1
SEASONALLY ADJUSTED							
2007							
September	438.9	381.1	897.6	85.2	119.8	57.0	1 982.7
December	454.3	371.0	925.0	80.6	119.6	54.1	2 009.9
2008							
March	446.9	367.7	828.2	74.9	123.0	53.3	1 897.0
June	447.2	412.8	935.2	72.8	124.7	51.2	2 034.1
September	466.1	417.1	874.7	65.5	127.8	52.9	2 009.1
December	464.5	412.5	860.3	70.5	133.7	55.5	2 008.2
TREND							
2007							
September	443.1	372.4	901.2	83.2	118.7	55.8	1 977.2
December	445.6	370.3	886.9	80.5	120.6	54.9	1 962.7
2008							
March	449.4	382.8	888.6	75.8	122.4	52.8	1 971.4
June	453.4	399.6	887.4	71.4	125.1	52.3	1 987.7
September	459.5	413.7	883.0	68.9	128.7	53.1	2 008.9
December	466.5	419.9	876.9	68.2	131.7	54.3	2 027.1

(a) For more information refer to paragraphs 4, 5 and 7 of the Explanatory Notes.

(b) Includes all states and both territories.

NUMBER OF LIVESTOCK SLAUGHTERED (a), Calves: All Series

Quarter	New South Wales	Victoria	Queensland	South Australia	Western Australia	Tasmania	Australia (b)
	'000	'000	'000	'000	'000	'000	'000
ORIGINAL							
2007							
September	51.6	297.9	15.6	1.4	1.1	37.5	405.2
December	46.1	88.5	10.9	0.8	1.0	7.2	154.6
2008							
March	37.5	42.4	12.3	1.1	1.0	2.0	96.4
June	46.0	140.9	13.9	1.4	1.1	4.8	208.3
September	33.4	282.2	12.9	1.6	1.2	39.1	370.7
December	39.6	80.7	11.2	0.9	1.1	7.1	140.7
SEASONALLY ADJUSTED							
2007							
September	52.9	140.3	14.9	1.2	1.0	12.7	223.6
December	47.2	140.7	12.8	1.1	1.0	11.5	213.3
2008							
March	37.3	147.7	12.5	1.1	1.2	20.2	194.8
June	44.1	145.9	12.5	1.2	1.0	14.9	211.8
September	34.4	133.5	12.3	1.4	1.1	13.2	204.7
December	40.3	127.8	13.2	1.3	1.1	11.7	193.9
TREND							
2007							
September	51.2	142.4	14.6	1.1	1.0	12.9	222.0
December	46.1	141.7	13.3	1.1	1.0	14.4	210.0
2008							
March	41.8	145.2	12.5	1.1	1.0	16.1	205.4
June	39.3	142.6	12.4	1.2	1.1	15.8	204.2
September	38.5	136.1	12.6	1.3	1.1	13.8	202.7
December	38.6	129.1	12.9	1.4	1.1	11.6	199.7

(a) For more information refer to paragraphs 4, 5 and 7 of the Explanatory Notes.

(b) Includes all states and both territories.

NUMBER OF LIVESTOCK SLAUGHTERED (a), Sheep: All Series

Quarter	New South Wales	Victoria	Queensland	South Australia	Western Australia	Tasmania	Australia (b)
	'000	'000	'000	'000	'000	'000	'000
ORIGINAL							
2007							
September	546.4	694.1	187.3	287.0	524.9	42.4	2 282.1
December	895.6	1 038.7	203.6	328.0	765.9	93.9	3 325.6
2008							
March	807.5	1 028.1	189.4	370.4	892.0	121.6	3 408.9
June	738.6	783.5	202.9	332.7	772.3	82.0	2 912.0
September	697.0	831.1	113.6	325.0	508.5	36.4	2 511.7
December	885.8	918.0	196.7	401.7	691.4	90.5	3 184.1
SEASONALLY ADJUSTED							
2007							
September	699.7	839.7	213.5	328.3	629.1	77.7	2 807.1
December	822.1	922.5	202.1	282.2	679.4	81.7	2 968.3
2008							
March	704.9	874.6	181.4	334.2	765.6	92.6	2 978.7
June	751.7	901.8	188.6	388.4	880.5	84.4	3 158.4
September	892.4	1 002.2	130.6	370.5	611.9	67.6	3 093.8
December	811.8	814.0	194.8	347.4	614.1	78.8	2 835.6
TREND							
2007							
September	730.1	832.5	223.8	315.9	631.8	76.5	2 814.5
December	724.8	860.6	202.5	311.7	707.8	83.8	2 890.1
2008							
March	757.3	912.9	183.3	335.1	773.6	86.6	3 046.4
June	783.8	922.8	171.0	362.6	766.8	82.3	3 084.0
September	819.6	915.1	165.6	371.2	698.0	76.6	3 038.4
December	857.3	891.1	169.2	362.3	610.9	72.8	2 944.9

(a) For more information refer to paragraphs 4, 5 and 7 of the Explanatory Notes.

(b) Includes all states and both territories.

NUMBER OF LIVESTOCK SLAUGHTERED (a), Lambs: All Series

Quarter	New South Wales	Victoria	Queensland	South Australia	Western Australia	Tasmania	Australia (b)
	'000	'000	'000	'000	'000	'000	'000
ORIGINAL							
2007							
September	1 236.4	2 237.7	102.8	883.6	592.9	129.1	5 182.5
December	1 235.2	2 484.5	121.2	1 064.6	639.3	136.2	5 680.9
2008							
March	1 082.7	2 203.5	97.3	911.6	606.0	112.2	5 013.3
June	1 125.2	2 196.1	104.2	850.6	619.2	127.2	5 022.4
September	1 111.9	1 967.2	103.3	724.5	630.9	116.0	4 653.9
December	1 248.7	2 434.1	89.1	1 042.9	726.0	111.8	5 652.6
SEASONALLY ADJUSTED							
2007							
September	1 290.2	2 352.5	101.9	1 044.3	635.5	124.7	5 514.0
December	1 192.4	2 319.9	122.9	985.4	625.3	142.9	5 405.9
2008							
March	1 109.7	2 254.7	102.6	864.5	611.2	121.8	5 065.5
June	1 094.1	2 199.1	98.8	839.5	587.5	116.6	4 932.1
September	1 155.6	2 066.7	102.8	851.2	677.1	112.1	4 943.4
December	1 206.5	2 267.6	89.7	961.3	710.6	117.0	5 374.8
TREND							
2007							
September	1 205.1	2 307.9	106.0	955.1	657.7	131.8	5 355.4
December	1 194.1	2 306.5	110.1	963.3	617.6	132.3	5 322.7
2008							
March	1 137.6	2 254.6	108.9	901.5	603.7	125.9	5 131.4
June	1 115.6	2 182.6	102.2	853.4	621.7	118.2	4 989.2
September	1 147.3	2 162.2	96.9	873.3	658.8	113.9	5 047.6
December	1 186.2	2 180.1	94.2	917.9	696.7	114.5	5 192.3

(a) For more information refer to paragraphs 4, 5 and 7 of the Explanatory Notes.

(b) Includes all states and both territories.

NUMBER OF LIVESTOCK SLAUGHTERED (a), Pigs: All Series

Quarter	New South Wales	Victoria	Queensland	South Australia	Western Australia	Tasmania	Australia (b)
	'000	'000	'000	'000	'000	'000	'000
ORIGINAL							
2007							
September	410.1	182.1	336.6	270.2	139.0	10.3	1 348.3
December	406.6	172.9	311.6	286.0	135.2	10.4	1 322.8
2008							
March	378.3	145.4	306.3	288.6	135.0	9.7	1 263.3
June	310.2	183.2	332.5	300.9	145.5	10.0	1 282.3
September	247.3	191.3	304.4	266.3	136.5	8.8	1 154.6
December	260.9	185.6	277.0	269.5	139.6	8.8	1 141.5
SEASONALLY ADJUSTED							
2007							
September	413.9	181.5	330.5	274.0	140.4	10.3	1 350.8
December	400.1	174.2	321.8	288.7	139.8	9.9	1 337.1
2008							
March	387.6	153.3	311.1	294.8	136.2	10.3	1 293.1
June	305.0	173.5	323.2	288.1	138.2	9.8	1 237.9
September	250.4	190.6	298.6	270.1	138.2	8.9	1 158.1
December	256.1	186.9	286.4	271.8	143.9	8.5	1 152.9
TREND							
2007							
September	410.6	182.5	324.4	271.6	140.1	10.6	1 339.6
December	403.5	169.7	322.3	285.5	138.6	10.3	1 330.5
2008							
March	367.5	164.7	319.2	292.6	137.5	10.0	1 292.4
June	315.0	172.3	311.9	285.5	137.8	9.7	1 232.6
September	269.6	183.0	302.0	276.5	139.6	9.1	1 180.1
December	237.7	192.5	291.4	268.9	142.2	8.5	1 140.6

(a) For more information refer to paragraphs 4, 5 and 7 of the Explanatory Notes.

(b) Includes all states and both territories.

NUMBER OF CHICKENS SLAUGHTERED(a): All Series

Quarter	New South Wales	Victoria	Queensland	South Australia	Western Australia	Australia
	'000	'000	'000	'000	'000	'000
ORIGINAL						
2007						
September	36 320.3	30 704.8	23 697.8	np	np	113 435.5
December	38 283.6	32 886.6	25 128.2	np	np	119 574.6
2008						
March	36 537.6	29 543.0	24 144.5	np	np	112 972.3
June	36 455.3	30 445.6	25 045.1	np	np	115 057.5
September	37 382.4	31 716.0	23 564.9	np	np	116 143.6
December	39 928.8	32 700.6	25 791.2	np	np	122 244.6
SEASONALLY ADJUSTED						
2007						
September	36 568.7	31 066.8	23 813.8	np	np	114 228.6
December	37 568.0	32 072.5	23 740.9	np	np	116 143.4
2008						
March	36 510.3	29 687.1	24 248.3	np	np	113 348.8
June	36 910.7	30 723.5	26 338.7	np	np	117 414.9
September	37 730.6	32 101.9	23 673.7	np	np	116 988.1
December	39 094.6	31 852.4	24 387.6	np	np	118 673.1
TREND						
2007						
September	37 181.0	31 396.2	23 656.6	np	np	114 812.9
December	36 866.8	31 007.4	24 122.6	np	np	114 788.9
2008						
March	36 804.6	30 684.6	24 683.4	np	np	115 243.9
June	37 117.7	30 890.5	24 912.7	np	np	116 196.3
September	37 805.7	31 473.2	24 692.1	np	np	117 397.7
December	38 739.5	32 196.8	24 257.5	np	np	118 677.4

np not available for publication but included in totals where applicable, unless otherwise indicated

(a) Excludes Tasmania, Northern Territory and the Australian Capital Territory. For more information refer to paragraphs 8 and 9 of the Explanatory Notes.

NUMBER OF LIVESTOCK SLAUGHTERED (a): Original

Financial year	New South Wales '000	Victoria '000	Queensland '000	South Australia '000	Western Australia '000	Tasmania '000	Australia '000
BULLS, BULLOCKS AND STEERS							
2005-06	915.3	577.7	2 299.0	176.8	187.4	81.1	4 238.5
2006-07	941.3	634.5	2 357.2	179.4	189.0	88.5	4 390.9
2007-08	922.0	579.2	2 181.6	161.9	209.3	77.3	4 132.0
COWS AND HEIFERS							
2005-06	675.0	803.6	1 347.9	148.0	246.6	116.2	3 341.6
2006-07	808.7	932.7	1 474.1	162.5	259.7	129.1	3 770.8
2007-08	866.4	953.9	1 411.5	150.6	278.2	137.8	3 802.3
CATTLE (excluding calves)							
2005-06	1 590.3	1 381.3	3 646.9	324.8	434.0	197.3	7 580.1
2006-07	1 750.0	1 567.2	3 831.3	341.9	448.7	217.5	8 161.7
2007-08	1 788.4	1 533.0	3 593.1	312.5	487.4	215.1	7 934.3
CALVES							
2005-06	204.6	505.2	62.3	4.4	3.7	40.2	821.2
2006-07	232.1	574.7	61.9	4.9	3.7	40.8	918.9
2007-08	181.2	569.8	52.7	4.6	4.1	51.5	864.5
SHEEP							
2005-06	3 707.5	3 722.0	940.0	1 061.9	2 120.6	277.7	11 829.7
2006-07	3 888.6	3 978.0	1 000.2	1 414.0	2 613.8	376.5	13 271.2
2007-08	2 988.0	3 544.4	783.2	1 318.1	2 955.0	339.9	11 928.6
LAMBS							
2005-06	4 227.3	7 613.5	283.6	3 231.2	2 798.4	511.6	18 665.6
2006-07	4 457.5	9 099.9	327.0	3 251.5	2 523.2	499.3	20 158.3
2007-08	4 679.5	9 121.7	425.5	3 710.4	2 457.4	504.6	20 899.1
PIGS							
2005-06	1 633.1	777.8	1 292.9	1 018.9	599.2	41.8	5 370.1
2006-07	1 601.4	788.0	1 269.7	1 047.3	568.1	42.7	5 321.9
2007-08	1 505.3	683.6	1 287.0	1 145.7	554.8	40.4	5 216.8
CHICKENS (b)							
2005-06	149 432.5	122 320.1	82 723.2	np	np	na	437 864.5
2006-07	150 244.9	126 303.4	89 576.0	np	np	na	453 910.2
2007-08	147 596.8	123 579.8	98 015.5	np	np	na	461 039.9

na not available

np not available for publication but included in totals where applicable, unless otherwise indicated

(a) Australian total includes all states and both territories, unless otherwise noted. For more information refer to paragraphs 4, 5 and 7 to 9 of the Explanatory Notes.

(b) Australian total excludes Tasmania, Northern Territory and the Australian Capital Territory.

RED MEAT PRODUCED(a), Beef: All Series

Quarter	New South Wales	Victoria	Queensland	South Australia	Western Australia	Tasmania	Australia(b)
	tonnes	tonnes	tonnes	tonnes	tonnes	tonnes	tonnes
ORIGINAL							
2007							
September	107 427	83 312	280 138	17 671	28 998	13 077	530 877
December	113 527	95 382	255 334	22 767	32 413	13 912	533 589
2008							
March	111 849	94 439	211 758	22 536	30 846	14 773	486 457
June	118 360	102 727	293 022	17 976	29 154	14 842	576 336
September	114 012	92 752	275 307	13 661	31 105	11 853	538 945
December	115 813	106 760	238 799	21 010	36 696	14 087	533 421
SEASONALLY ADJUSTED							
2007							
September	111 960	92 063	256 027	22 365	30 313	15 227	528 738
December	113 618	90 503	266 229	20 529	29 900	14 096	535 249
2008							
March	112 488	91 651	236 921	19 569	30 207	13 579	510 978
June	112 999	101 822	278 005	18 962	31 090	13 927	549 378
September	118 860	102 484	252 360	17 266	32 436	13 791	537 398
December	115 868	101 198	248 488	18 947	33 898	14 236	534 452
TREND							
2007							
September	112 629	89 450	257 637	21 840	29 998	14 731	527 533
December	112 225	90 647	254 655	20 849	30 067	14 324	524 836
2008							
March	113 126	94 681	257 610	19 582	30 340	13 819	529 713
June	114 562	98 750	258 755	18 624	31 215	13 753	534 680
September	116 136	101 836	257 139	18 223	32 438	13 929	538 504
December	117 419	102 828	254 140	18 215	33 534	14 111	539 977

(a) For more information refer to paragraphs 4 to 7 of the Explanatory Notes.

(b) Includes all states and both territories.

	New South Wales	Victoria	Queensland	South Australia	Western Australia	Tasmania	Australia(b)
Quarter	tonnes	tonnes	tonnes	tonnes	tonnes	tonnes	tonnes
ORIGINAL							
2007							
September	3 393	5 938	579	41	76	718	10 757
December	3 047	2 092	453	30	67	152	5 853
2008							
March	2 454	1 146	488	35	65	49	4 250
June	3 023	3 035	521	42	69	105	6 807
September	2 142	5 919	509	48	78	765	9 473
December	2 322	2 400	462	32	69	146	5 443
SEASONALLY ADJUSTED							
2007							
September	3 499	2 948	566	37	64	251	7 431
December	3 131	2 976	510	36	70	234	6 983
2008							
March	2 438	3 499	491	36	77	351	6 016
June	2 880	3 158	476	39	67	293	6 728
September	2 213	2 963	497	43	67	267	6 532
December	2 378	3 365	520	39	72	231	6 492
TREND							
2007							
September	3 373	2 984	569	37	69	252	7 281
December	3 046	3 120	516	36	71	275	6 812
2008							
March	2 760	3 221	488	37	71	302	6 506
June	2 554	3 207	486	39	70	299	6 452
September	2 426	3 168	497	40	69	271	6 523
December	2 338	3 167	512	41	69	238	6 599

(a) For more information refer to paragraphs 4 to 7 of the Explanatory Notes.

(b) Includes all states and both territories.

RED MEAT PRODUCED(a), Mutton: All Series

Quarter	New South Wales	Victoria	Queensland	South Australia	Western Australia	Tasmania	Australia(b)
	tonnes	tonnes	tonnes	tonnes	tonnes	tonnes	tonnes
ORIGINAL							
2007							
September	12 301	14 576	3 848	7 207	10 880	825	49 637
December	20 726	23 081	4 570	8 324	16 512	1 886	75 098
2008							
March	18 476	21 478	4 107	8 771	18 702	2 378	73 912
June	16 011	15 024	4 119	7 489	15 598	1 562	59 803
September	15 017	16 541	2 409	7 539	10 810	701	53 017
December	19 527	18 816	4 273	9 641	14 915	1 806	68 978
SEASONALLY ADJUSTED							
2007							
September	15 485	17 553	4 344	8 046	12 948	1 503	60 592
December	17 810	19 458	4 275	7 051	14 349	1 584	64 664
2008							
March	16 693	18 538	3 984	7 993	16 191	1 752	65 220
June	17 223	18 338	4 049	9 048	18 191	1 726	67 541
September	18 795	19 810	2 737	8 392	12 919	1 289	64 715
December	16 745	15 813	3 985	8 201	12 964	1 513	59 330
TREND							
2007							
September	15 884	17 192	4 555	7 688	13 100	1 471	60 144
December	16 268	18 236	4 287	7 651	14 837	1 617	63 060
2008							
March	17 341	19 162	3 971	8 033	16 236	1 688	66 301
June	17 589	18 841	3 681	8 461	16 054	1 612	66 034
September	17 666	18 182	3 482	8 571	14 621	1 496	64 055
December	17 655	17 285	3 463	8 379	12 862	1 406	61 349

(a) For more information refer to paragraphs 4 to 7 of the Explanatory Notes.

(b) Includes all states and both territories.

RED MEAT PRODUCED(a), Lamb: All Series

Quarter	<i>New South Wales</i>	<i>Victoria</i>	<i>Queensland</i>	<i>South Australia</i>	<i>Western Australia</i>	<i>Tasmania</i>	Australia (b)
	tonnes	tonnes	tonnes	tonnes	tonnes	tonnes	tonnes
ORIGINAL							
2007							
September	24 900	46 042	2 021	19 059	11 564	2 625	106 211
December	25 057	53 059	2 601	24 257	12 753	2 848	120 576
2008							
March	22 041	46 732	2 060	20 384	12 222	2 306	105 745
June	22 388	44 448	2 023	19 018	12 338	2 644	102 860
September	21 275	38 458	1 996	14 675	12 546	2 411	91 360
December	24 362	48 601	1 718	22 116	14 629	2 272	113 698
SEASONALLY ADJUSTED							
2007							
September	26 295	48 696	2 014	22 910	12 509	2 500	114 954
December	24 319	49 711	2 582	22 975	12 537	3 016	115 327
2008							
March	22 113	47 469	2 158	18 892	12 306	2 541	104 279
June	21 874	44 357	1 966	18 513	11 580	2 413	101 549
September	22 369	40 676	1 994	17 487	13 600	2 293	98 852
December	23 666	45 526	1 688	20 926	14 366	2 401	108 110
TREND							
2007							
September	24 256	48 282	2 100	21 462	13 092	2 701	111 604
December	24 198	48 743	2 280	21 772	12 304	2 747	111 754
2008							
March	22 905	47 143	2 267	20 091	12 052	2 626	106 988
June	22 088	44 460	2 062	18 506	12 421	2 452	102 065
September	22 480	43 124	1 881	18 586	13 196	2 338	101 803
December	23 178	43 161	1 768	19 559	14 026	2 342	104 153

(a) For more information refer to paragraphs 4 to 7 of the Explanatory Notes.

(b) Includes all states and both territories.

RED MEAT PRODUCED(a), Pig meat: All Series

Quarter	New South Wales	Victoria	Queensland	South Australia	Western Australia	Tasmania	Australia(b)
	tonnes	tonnes	tonnes	tonnes	tonnes	tonnes	tonnes
ORIGINAL							
2007							
September	28 902	13 387	24 903	20 900	9 570	609	98 271
December	28 614	12 909	22 329	21 448	9 181	597	95 079
2008							
March	26 604	11 238	22 725	20 662	9 213	557	90 999
June	22 120	13 623	24 795	22 056	9 836	582	93 013
September	17 068	14 399	22 629	19 295	9 196	506	83 093
December	17 244	13 474	20 218	20 071	9 409	507	80 924
SEASONALLY ADJUSTED							
2007							
September	28 912	13 013	24 230	21 049	9 650	601	97 547
December	28 755	13 159	23 421	21 771	9 570	570	97 312
2008							
March	27 559	12 090	23 526	21 359	9 250	603	94 097
June	21 253	12 856	23 528	20 926	9 330	572	88 673
September	17 145	13 974	22 021	19 450	9 306	500	82 613
December	17 278	13 712	21 248	20 301	9 773	486	82 747
TREND							
2007							
September	28 883	13 470	23 857	20 592	9 642	616	97 127
December	28 720	12 762	23 743	21 428	9 483	598	96 720
2008							
March	26 122	12 548	23 581	21 447	9 336	580	93 588
June	22 073	12 965	23 036	20 694	9 313	558	88 699
September	18 497	13 490	22 271	20 135	9 429	520	84 458
December	15 980	14 001	21 465	19 830	9 630	486	81 438

(a) For more information refer to paragraphs 4 to 7 of the Explanatory Notes.

(b) Includes all states and both territories.

TOTAL RED MEAT PRODUCED(a): All Series

Quarter	New South Wales	Victoria	Queensland	South Australia	Western Australia	Tasmania	Australia(b)
	tonnes	tonnes	tonnes	tonnes	tonnes	tonnes	tonnes
ORIGINAL							
2007							
September	176 923	163 255	311 488	64 877	61 088	17 854	795 753
December	190 970	186 523	285 288	76 825	70 926	19 394	830 195
2008							
March	181 424	175 032	241 138	72 387	71 049	20 063	761 362
June	181 902	178 858	324 480	66 582	66 994	19 734	838 819
September	169 513	168 068	302 850	55 218	63 735	16 235	775 887
December	179 269	190 051	265 470	72 870	75 718	18 818	802 464
SEASONALLY ADJUSTED							
2007							
September	186 151	174 273	287 181	74 408	65 484	20 082	809 262
December	187 634	175 808	297 017	72 362	66 425	19 500	819 534
2008							
March	181 290	173 247	267 081	67 849	68 032	18 827	780 590
June	176 229	180 532	308 025	67 488	70 259	18 930	813 868
September	179 382	179 908	279 610	62 637	68 327	18 138	790 111
December	175 934	179 615	275 929	68 415	71 074	18 867	791 131
TREND							
2007							
September	185 025	171 378	288 718	71 618	65 900	19 771	803 689
December	184 456	173 508	285 482	71 736	66 762	19 561	803 182
2008							
March	182 255	176 754	287 916	69 191	68 036	19 015	803 096
June	178 867	178 223	288 019	66 323	69 073	18 674	797 930
September	177 204	179 800	285 270	65 555	69 753	18 554	795 343
December	176 571	180 443	281 347	66 024	70 122	18 584	793 516

(a) For more information refer to paragraphs 4 to 7 of the Explanatory Notes.

(b) Includes all states and both territories.

CHICKEN MEAT PRODUCED(a): All Series

Quarter	New South Wales	Victoria	Queensland	South Australia	Western Australia	Australia
	tonnes	tonnes	tonnes	tonnes	tonnes	tonnes
ORIGINAL						
2007						
September	68 748	57 002	37 640	np	np	199 865
December	69 506	61 849	39 238	np	np	207 705
2008						
March	65 205	54 459	38 143	np	np	194 188
June	63 874	58 091	41 454	np	np	200 625
September	67 693	60 271	38 902	np	np	205 667
December	70 783	61 657	40 047	np	np	211 180
SEASONALLY ADJUSTED						
2007						
September	70 099	58 060	37 128	np	np	201 464
December	69 183	59 863	38 105	np	np	204 052
2008						
March	64 769	55 504	38 691	np	np	195 678
June	63 332	57 912	42 559	np	np	201 218
September	69 158	61 292	38 514	np	np	207 407
December	70 338	59 725	38 960	np	np	207 468
TREND						
2007						
September	70 845	58 766	37 033	np	np	202 791
December	67 643	57 910	38 191	np	np	200 303
2008						
March	65 415	57 531	39 692	np	np	199 662
June	65 561	58 279	40 212	np	np	201 576
September	67 499	59 554	39 859	np	np	205 016
December	70 138	60 882	39 089	np	np	208 740

np not available for publication but included in totals where applicable, unless otherwise indicated

(a) Excludes Tasmania, Northern Territory and the Australian Capital Territory. For more information refer to paragraphs 8 and 9 of the Explanatory Notes.

MEAT PRODUCED(a): Original

<i>Financial year</i>	<i>New South Wales</i> tonnes	<i>Victoria</i> tonnes	<i>Queensland</i> tonnes	<i>South Australia</i> tonnes	<i>Western Australia</i> tonnes	<i>Tasmania</i> tonnes	<i>Australia</i> tonnes
BEEF							
2005-06	411 202	331 311	1 054 198	83 547	113 318	54 807	2 049 521
2006-07	453 065	370 471	1 106 975	90 136	114 434	59 580	2 195 713
2007-08	451 163	375 860	1 040 252	80 949	121 412	56 603	2 127 259
VEAL							
2005-06	13 288	10 011	2 994	149	250	809	27 551
2006-07	15 110	11 655	2 543	157	249	815	30 579
2007-08	11 917	12 211	2 041	148	277	1 024	27 667
MUTTON							
2005-06	78 795	70 562	19 102	24 098	45 939	5 294	243 791
2006-07	82 552	74 875	19 854	32 962	53 553	7 192	270 988
2007-08	67 514	74 159	16 643	31 791	61 692	6 650	258 450
LAMB							
2005-06	84 763	153 449	5 457	69 636	58 080	10 452	381 837
2006-07	88 855	184 913	6 048	71 871	50 610	10 286	412 583
2007-08	94 386	190 281	8 706	82 718	48 877	10 423	435 391
PIG MEAT							
2005-06	115 908	57 015	95 628	76 663	40 977	2 374	388 863
2006-07	109 637	58 316	94 276	78 008	38 901	2 487	381 865
2007-08	106 239	51 158	94 751	85 066	37 799	2 345	377 362
TOTAL RED MEAT							
2005-06	703 956	622 349	1 177 380	254 093	258 563	73 735	3 091 562
2006-07	749 219	700 230	1 229 696	273 136	257 746	80 360	3 291 728
2007-08	731 219	703 668	1 162 392	280 671	270 057	77 046	3 226 129
CHICKEN MEAT (b)							
2005-06	285 294	215 448	135 650	np	np	na	772 613
2006-07	291 907	236 020	139 601	np	np	na	811 591
2007-08	267 333	231 401	156 475	np	np	na	802 384

na not available

np not available for publication but included in totals where applicable, unless otherwise indicated

(a) For more information refer to paragraphs 4 to 9 in the Explanatory Notes.

(b) Excludes Tasmania, Northern Territory and the Australian Capital Territory.

Period	FRESH, CHILLED OR FROZEN MEAT									PROCESSED MEAT	
	Beef bone-in tonnes	Beef bone-out tonnes	Veal bone-in tonnes	Veal bone-out tonnes	Mutton bone-in tonnes	Mutton bone-out tonnes	Lamb bone-in tonnes	Lamb bone-out tonnes	Pork tonnes	Bacon and ham tonnes	Canned meat tonnes
2005-06	52 196	890 604	3 266	5 793	106 948	41 458	119 523	26 491	44 007	292	20 857
2006-07	52 389	971 531	3 753	5 792	124 851	42 826	127 491	29 042	41 313	550	16 051
2007-08	57 199	917 494	3 704	5 049	119 496	43 827	134 101	32 499	39 138	772	12 493
2007											
September	12 745	230 120	1 037	1 956	19 988	7 859	31 534	8 043	10 912	98	2 766
December	15 341	248 642	965	1 533	37 221	12 511	40 516	8 697	9 710	209	2 895
2008											
March	11 194	183 511	772	572	34 010	11 475	31 496	7 469	8 949	225	3 400
June	17 919	255 221	930	988	28 276	11 982	30 555	8 291	9 568	239	3 432
September	12 983	238 438	1 397	1 801	20 543	8 440	25 605	5 047	8 953	266	3 287
December	13 023	259 643	984	1 342	32 467	13 702	38 167	9 227	8 114	99	3 455

(a) For more information refer to paragraphs 10 and 11 of the Explanatory Notes.

EXPORTS OF LIVE SHEEP AND CATTLE, Australia(a): Original

<i>Period</i>	<i>Number</i>	<i>Gross weight</i>	<i>Gross value</i>	<i>Unit value</i>
	'000	'000 tonnes	\$'000	\$
.....				
SHEEP				
2005-06	4 247.7	209.5	291 452	68.61
2006-07	4 137.9	198.8	288 697	69.77
2007-08	4 069.0	197.0	286 442	70.40
2007				
September	910.1	43.5	63 022	69.25
December	1 279.1	62.3	91 101	71.22
2008				
March	992.8	48.2	67 334	67.82
June	886.9	42.9	64 985	73.27
September	1 099.1	52.8	86 570	78.77
December	1 234.0	60.3	101 446	82.21
.....				
CATTLE				
2005-06	548.8	182.7	357 793	651.99
2006-07	638.0	216.1	437 427	685.58
2007-08	713.3	241.2	450 511	631.63
2007				
September	216.0	74.2	137 654	637.25
December	135.6	45.8	88 620	653.75
2008				
March	183.5	59.2	115 127	627.51
June	178.2	61.9	109 111	612.23
September	228.0	75.4	141 114	618.90
December	227.0	72.2	167 327	737.23

(a) For more information refer to paragraph 12 of the Explanatory Notes.

WHOLE MILK INTAKE, By Factories(a)(b): All Series

Quarter	New South Wales	Victoria	Queensland	South Australia	Western Australia	Tasmania	Australia
	ML	ML	ML	ML	ML	ML	ML
ORIGINAL							
2007							
June	247	1 045	113	145	81	103	1 734
September	275	1 555	125	145	86	119	2 304
December	294	2 046	134	180	89	251	2 993
2008							
March	244	1 374	116	143	69	172	2 118
June	236	1 117	110	138	76	120	1 797
September	271	1 577	128	149	86	130	2 341
SEASONALLY ADJUSTED							
2007							
June	273	1 510	124	158	85	156	2 307
September	268	1 542	118	153	82	168	2 331
December	261	1 477	124	151	79	160	2 251
2008							
March	260	1 512	122	149	79	164	2 285
June	260	1 602	121	154	80	179	2 396
September	264	1 555	121	157	82	183	2 362
TREND							
2007							
June	270	1 504	124	159	85	159	2 301
September	267	1 503	121	154	82	161	2 288
December	262	1 510	121	150	80	163	2 287
2008							
March	260	1 529	122	151	79	168	2 309
June	261	1 557	122	153	80	175	2 348
September	262	1 581	121	156	81	182	2 383

(a) For more information refer to paragraph 13 of the Explanatory Notes.

(b) Data for Australian Capital Territory are included in New South Wales; data for Northern Territory are included in South Australia.

Source: Original series data from Dairy Australia.

MARKET MILK SALES, By Factories(a)(b): All Series

	<i>New South Wales</i>	<i>Victoria</i>	<i>Queensland</i>	<i>South Australia</i>	<i>Western Australia</i>	<i>Tasmania</i>	<i>Australia</i>
<i>Quarter</i>	ML	ML	ML	ML	ML	ML	ML
ORIGINAL							
2007							
June	175	129	121	53	59	14	550
September	174	129	128	53	59	14	557
December	168	127	125	52	59	14	545
2008							
March	167	129	124	50	59	14	542
June	173	135	127	52	60	14	561
September	175	135	129	53	62	14	568
SEASONALLY ADJUSTED							
2007							
June	173	128	122	53	59	14	549
September	170	127	125	52	58	14	545
December	170	129	125	52	59	14	549
2008							
March	170	132	126	52	60	14	554
June	171	132	127	51	60	14	556
September	172	133	126	51	61	14	556
TREND							
2007							
June	172	127	122	52	58	14	545
September	171	128	124	52	59	14	548
December	170	129	125	52	59	14	550
2008							
March	170	131	126	52	60	14	553
June	171	132	126	52	60	14	555
September	172	133	127	51	61	14	557

(a) For more information refer to paragraph 13 of the Explanatory Notes.

(b) Data for Australian Capital Territory are included in New South Wales; data for Northern Territory are included in South Australia.

Source: Original series data from Dairy Australia.

BROKERS AND DEALERS RECEIVALS OF TAXABLE WOOL(a): All Series

Quarter	New South Wales	Victoria	Queensland	South Australia	Western Australia	Tasmania	Australia	% of total received by brokers
	tonnes	tonnes	tonnes	tonnes	tonnes	tonnes	tonnes	%
ORIGINAL								
2007								
September	37 528	25 975	3 744	17 841	20 646	2 896	108 630	83.6
December	34 652	33 724	2 977	19 328	25 562	2 165	118 408	79.7
2008								
March	29 895	24 831	2 193	14 869	25 320	1 691	98 799	81.1
June	29 094	21 438	3 370	11 927	13 771	2 443	82 044	79.3
September	35 673	22 069	3 395	16 466	20 177	2 642	100 421	83.9
December	31 407	27 368	2 185	15 851	23 437	2 636	102 884	77.8
SEASONALLY ADJUSTED								
2007								
September	32 333	27 117	2 804	16 075	20 851	2 593	101 772	..
December	32 083	27 200	3 692	16 979	22 821	1 845	104 620	..
2008								
March	33 910	25 015	3 043	15 691	21 031	2 307	100 998	..
June	33 060	26 337	2 932	14 761	20 055	2 588	99 731	..
September	30 729	23 142	2 562	14 992	20 452	2 368	94 245	..
December	29 248	22 199	2 708	13 906	20 765	2 221	91 047	..
TREND								
2007								
September	32 114	27 609	3 444	17 556	22 987	2 338	106 048	..
December	32 929	26 580	3 271	16 309	21 787	2 211	103 089	..
2008								
March	33 232	26 000	3 120	15 655	20 934	2 263	101 204	..
June	32 556	25 019	2 913	15 150	20 605	2 391	98 634	..
September	31 125	23 729	2 686	14 557	20 345	2 413	94 855	..
December	29 687	22 647	2 632	14 262	20 535	2 310	92 072	..

.. not applicable

(a) For more information refer to paragraphs 4, 14 and 15 of the Explanatory Notes.

<i>Financial year</i>	<i>New South Wales</i>	<i>Victoria</i>	<i>Queensland</i>	<i>South Australia</i>	<i>Western Australia</i>	<i>Tasmania</i>	<i>Australia</i>
-----------------------	------------------------	-----------------	-------------------	------------------------	--------------------------	-----------------	-------------------------

.....

WHOLE MILK INTAKE BY FACTORIES (b) (ML)

2005-06	1 217	6 583	609	680	377	622	10 089
2006-07	1 105	6 297	534	655	349	642	9 582
2007-08	1 049	6 092	486	606	319	661	9 213

.....

MARKET MILK SALES BY FACTORIES (b) (ML)

2005-06	656	495	445	198	219	53	2 066
2006-07	683	509	477	207	229	55	2 160
2007-08	682	520	502	207	237	55	2 204

.....

BROKERS AND DEALERS RECEIVALS OF TAXABLE WOOL (Tonnes)

2005-06	141 422	119 382	18 558	62 004	118 801	12 360	472 527
2006-07	124 884	121 439	15 927	72 269	104 492	11 518	450 529
2007-08	131 170	105 968	12 283	63 966	85 299	9 195	407 881

.....

(a) For more information refer to paragraphs 13 to 15 of the Explanatory Notes.

(b) Data for Australian Capital Territory are included in New South Wales; data for Northern Territory are included in South Australia.

Source: Original series milk data from Dairy Australia.

EXPLANATORY NOTES

INTRODUCTION

1 This publication contains information on livestock slaughterings, meat production, exports of live sheep and live cattle, exports of fresh, chilled, frozen and processed meat, and whole milk intake by factories, market milk sales by factories and receivals of taxable wool by wool brokers and dealers.

2 The figures shown in this publication have been revised where necessary and as a consequence may not agree with similar data shown in previous publications.

3 Where figures have been rounded, discrepancies may occur between sums of the component items and totals.

4 Unless indicated otherwise, Australian totals include data for all states and both territories. Where states and territories do not appear in tables, this is for reasons of confidentiality.

LIVESTOCK SLAUGHTERINGS AND MEAT PRODUCTION

5 The statistics on slaughterings for red meat production are based on a monthly collection from abattoirs and other major slaughtering establishments and include estimates of animals slaughtered on farms and by country butchers and other small slaughtering establishments.

6 Red meat is shown in carcass weight and excludes offal.

7 Care should be taken when using this information as the figures only relate to slaughterings for human consumption and do not include animals condemned, slaughtered for pet food or those killed for boiling down.

8 Poultry slaughterings and meat produced statistics have been compiled from quarterly returns supplied by commercial poultry slaughtering establishments and comprise boilers, fryers and roasters. Many small producers are excluded from the collection; however, the statistics represent a high level of coverage. Tasmanian, Northern Territory and Australian Capital Territory data are excluded from the Australian total.

9 Chicken meat is shown in dressed weight of whole birds, pieces and giblets. Some slaughterings and meat production statistics for 'Ducks and Drakes' and 'Other Fowls and Turkeys' are available on request. Inquiries should be made to the National Information and Referral Service on 1300 135 070.

EXPORTS OF FRESH, CHILLED, FROZEN AND PROCESSED MEAT

10 Table 20 shows exports of fresh, chilled, frozen and processed meat. International trade statistics are compiled by the ABS from information submitted by exporters and importers or their agents to the Australian Customs Service. Factors can be applied to beef, veal, mutton and lamb bone-out figures to derive bone-in carcass weight which, when added to bone-in figures, shows total exports in carcass weight. The factor for beef and veal is 1.5 and for mutton and lamb, 2.0. This information is sourced from Department of Agriculture, Fisheries and Forestry – Australia.

11 Beef also includes buffalo meat. Bacon and ham shown is the cured carcass weight of smoked or cooked bacon and ham. It also includes the stated net weight of packs of canned bacon and ham. Canned meat is shown as the canned weight and excludes canned bacon and ham.

LIVE SHEEP AND CATTLE EXPORTS

12 Table 21 contains statistics of the number of live sheep and cattle exported, the gross weight, gross value and unit value. The unit value is obtained by dividing the gross value by the number of animals exported. Sheep and cattle exported for breeding are excluded.

EXPLANATORY NOTES *continued*

MILK

13 Tables 2, 22, 23 and 25 contain statistics collected by Dairy Australia. Data on the latest quarter are not yet available. Whole milk intake by factories includes the whole milk equivalent of farm cream intake. Market milk sales includes white, flavoured, high and low fat milk and UHT milk. Interstate transfers of UHT milk have been included in their state of destination.

WOOL RECEIVALS

14 The statistics in tables 2, 24 and 25 show the amount of taxable wool received by brokers and purchased by dealers from wool producers. It excludes wool received by brokers on which tax has already been paid by other dealers (private buyers) or brokers.

15 The information shown is on the basis of the state in which wool has actually been received and does not necessarily reflect the production of wool in that state.

SEASONAL ADJUSTMENT

16 Seasonal adjustment is a means of removing the estimated effects of normal seasonal variation from the series so that the effects of other influences can be more clearly recognised.

17 In the seasonal adjustment of the livestock estimates, account has been taken of both normal seasonal factors and 'trading day' effects, where significant (arising from the varying length of each quarter and the varying numbers of Sundays, Mondays, Tuesdays etc. in the quarter). Adjustments are also made for the effects of change in the date of Easter holidays, again, where significant. Seasonal adjustment does not remove from the series the effect of irregular influences (e.g. abnormal weather, industrial disputes).

18 The state component series have been seasonally adjusted independently. Therefore, the adjusted components may not add to the Australian group totals.

19 In this publication, the seasonally adjusted estimates are produced by the concurrent seasonal adjustment method which takes account of the latest available original estimates. This method improves the estimation of seasonal factors and therefore, the seasonally adjusted and trend estimates for the current and previous quarters. As a result of this improvement, revisions to the seasonally adjusted and trend estimates will be observed for recent periods. In most instances the only noticeable revisions will be to the previous quarter and the same quarter one year ago. A more detailed review is conducted annually prior to the September quarter release, using data up to and including the June quarter. The concurrent seasonal adjustment methodology replaces the forward factor methodology used previously.

20 From the September quarter 2007, improved methods of producing seasonally adjusted estimates, focused on the application of Autoregressive Integrated Moving Average (ARIMA) modelling techniques, were implemented. ARIMA modelling relies on the characteristics of the series being analysed to project future period data. As a result, use of ARIMA modelling generally results in a reduction in revisions to seasonally adjusted and trend estimates when subsequent data become available. For more information on the details of ARIMA modelling, see the feature article '*Use of ARIMA modelling to reduce revisions*' in the October 2004 issue of *Australian Economic Indicators* (cat. no. 1350.0).

TREND ESTIMATES

21 A trend estimate is obtained by reducing the irregular component in the seasonally adjusted series. In this publication trend estimates are generally derived by applying a 7-term Henderson moving average to the seasonally adjusted series. The 7-term Henderson (like all Henderson averages) is symmetric, but as the end of a time series is approached, asymmetric forms of the average are applied. Unlike the weights of the standard 7-term Henderson moving average, the weights employed here have been tailored to suit the particular characteristics of individual series. While the asymmetric weights enable the trend to be calculated for recent quarters, it does result in revisions to the estimates for the most recent three quarters as additional observations become

EXPLANATORY NOTES *continued*

TREND ESTIMATES *continued*

available. Revisions of trend estimates will also occur with revisions to the original data and re-estimation of seasonal factors.

22 Sensitivity analysis indicates the potential magnitude and direction of revisions created to the last three estimates. It aims to show how a specified movement in the seasonally adjusted data in the next period will affect the trend path of the time series. By showing how sensitive the trend estimates are to the addition of new data, the analysis provides information which can be used in the assessment of the trend's stability. For more information, refer to the Appendix.

23 The state component series have been adjusted independently. Therefore, the adjusted components may not add to the Australian group totals.

24 For further information, see *Information Paper: A Guide to Interpreting Time Series – Monitoring 'Trends', an Overview* (cat. no. 1348.0) or contact the Assistant Director, Time Series Analysis on Canberra (02) 6252 6345.

RELATED PUBLICATIONS

25 Current publications and other products released by the ABS are listed in the *Catalogue of Publications and Products* (cat. no. 1101.0). The Catalogue is available from the ABS web site <<http://www.abs.gov.au>>. The ABS also issues a daily Release Advice on the web site which details products to be released in the week ahead.

GENERAL ACKNOWLEDGMENT

26 ABS publications draw extensively on information provided freely by individuals, businesses, governments and other organisations. Their continued cooperation is very much appreciated. Without it, the wide range of statistics published by the ABS would not be available. Information received by the ABS is treated in strict confidence as required by the *Census and Statistics Act 1905*.

APPENDIX WHAT IF ... ? REVISIONS TO TREND ESTIMATES

TREND REVISIONS

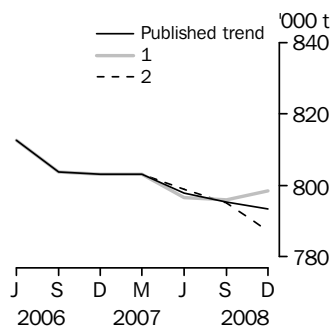
Recent seasonally adjusted and trend estimates are likely to be revised when original estimates for subsequent quarters become available. The approximate effects of possible scenarios on trend estimates are presented in the 'What-if' graphs below. These illustrate the impact on trend estimates if next quarter's seasonally adjusted estimate either rises (1) or falls (2) by a certain percentage, based on the historical average of movements in seasonally adjusted estimates.

For further information, see paragraphs 21 to 23 of the Explanatory Notes.

Red meat production

1. The next quarter's seasonally adjusted estimate of red meat production is 2.5% higher than the September quarter 2008 estimate.
2. The next quarter's seasonally adjusted estimate of red meat production is 2.5% lower than the September quarter 2008 estimate.

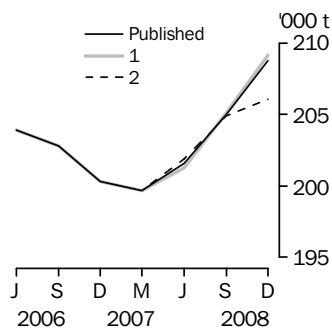
WHAT-IF RED MEAT PRODUCTION



Chicken meat production

1. The next quarter's seasonally adjusted estimate of chicken meat production is 2.6% higher than the September quarter 2008 estimate.
2. The next quarter's seasonally adjusted estimate of chicken meat production is 2.6% lower than the September quarter 2008 estimate.

WHAT-IF CHICKEN MEAT PRODUCTION

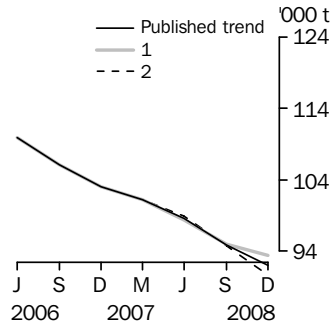


APPENDIX WHAT IF ... ? REVISIONS TO TREND ESTIMATES *continued*

Wool receivals

1. The next quarter's seasonally adjusted estimate of wool receivals is 5.4% higher than the September quarter 2008 estimate.
2. The next quarter's seasonally adjusted estimate of wool receivals is 5.4% lower than the September quarter 2008 estimate.

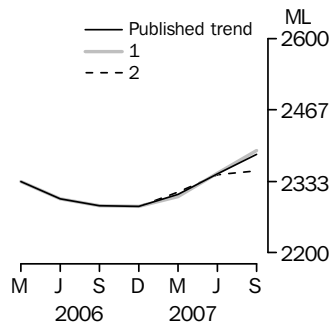
WHAT-IF WOOL RECEIVALS



Whole milk intake by factories

1. The next quarter's seasonally adjusted estimate of whole milk intake by factories is 2.8% higher than the June quarter 2008 estimate.
2. The next quarter's seasonally adjusted estimate of whole milk intake by factories is 2.8% lower than the June quarter 2008 estimate.

WHAT-IF WHOLE MILK INTAKE BY FACTORIES



FOR MORE INFORMATION . . .

INTERNET

www.abs.gov.au the ABS website is the best place for data from our publications and information about the ABS.

INFORMATION AND REFERRAL SERVICE

Our consultants can help you access the full range of information published by the ABS that is available free of charge from our website. Information tailored to your needs can also be requested as a 'user pays' service. Specialists are on hand to help you with analytical or methodological advice.

PHONE

1300 135 070

EMAIL

client.services@abs.gov.au

FAX

1300 135 211

POST

Client Services, ABS, GPO Box 796, Sydney NSW 2001

FREE ACCESS TO STATISTICS

All statistics on the ABS website can be downloaded free of charge.

WEB ADDRESS

www.abs.gov.au